



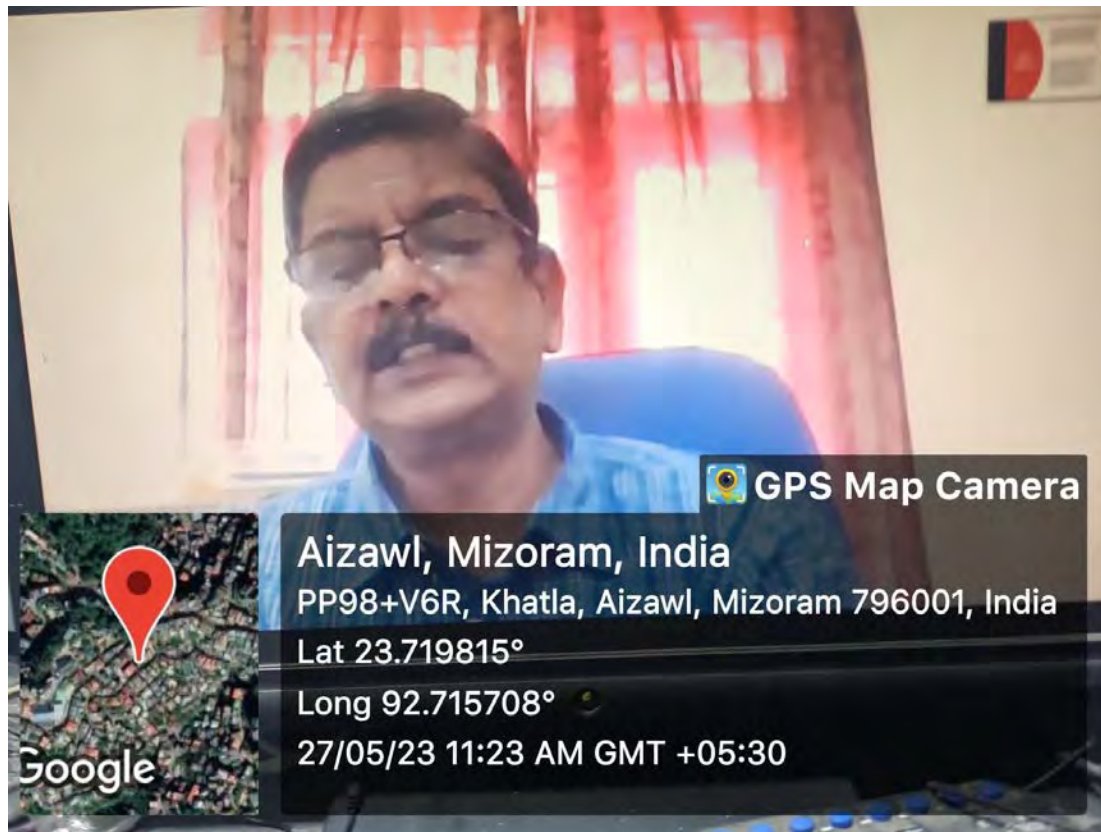
The "2-Day International Conference on Health Psychology and It's Allied Sciences" organized by the Department of Psychology, Pachhunga University College was successfully inaugurated by our respected Principal, Prof. H. Lalthanzara today. 15 papers from within Mizoram and 13 papers from outside the state amounting to a total of 28 papers have been received and presented in this conference. Keynote speaker from Malaysia and invited speakers from Nepal, Hyderabad, Chennai and Aizawl participated and gave insightful presentations.

Ralte

Prof. Rinpari Ralte
 Head
 Department of Psychology

2-DAY INTERNATIONAL CONFERENCE ON HEALTH PSYCHOLOGY AND ALLIED SCIENCES
Organised by Department of Psychology, Pachhunga University College

REPORT ON DAY-2

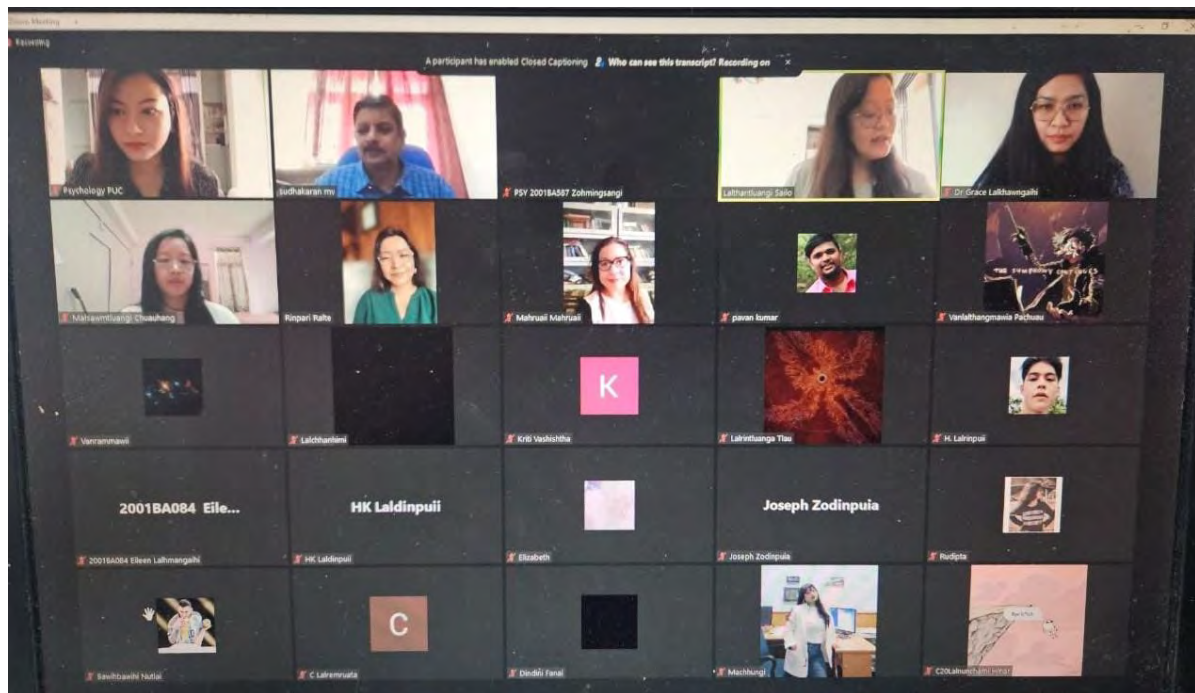


Significance of Social Determinants

- Research shows that the social determinants of health can be more important than health care or lifestyle choices in influencing health. For example, numerous studies suggest that SDH account for between 30-55% of health outcomes.
- Addressing SDH appropriately is fundamental to improving health and reducing longstanding inequities in health, which requires action across sectors and civil society.
- Social Determinants approach that prioritizes focus on equity and marginalized populations support all communities to have resources to promote health, to adhere to public health measures while minimizing negative impact of these measures should be integrated into pandemic prevention, preparedness, and recovery.

Aizawl, MZ, India
Hospital Road, Dawrpui, Aizawl, 796001, MZ, India
Lat 23.730083, Long 92.716916
05/27/2023 11:27 AM GMT+05:30
Note : Captured by GPS Map Camera

On the right side of the slide, there is a vertical stack of four small video call windows. The top window shows a woman with the label "Psychology PUC". The second window shows the same man from the first image with the label "sudhakaran miv". The third window shows a woman with the label "Lalthantluangi Sello". The bottom window shows a woman with the label "Rinpari Ralte".



Johnny Lalhthamkima is presenting

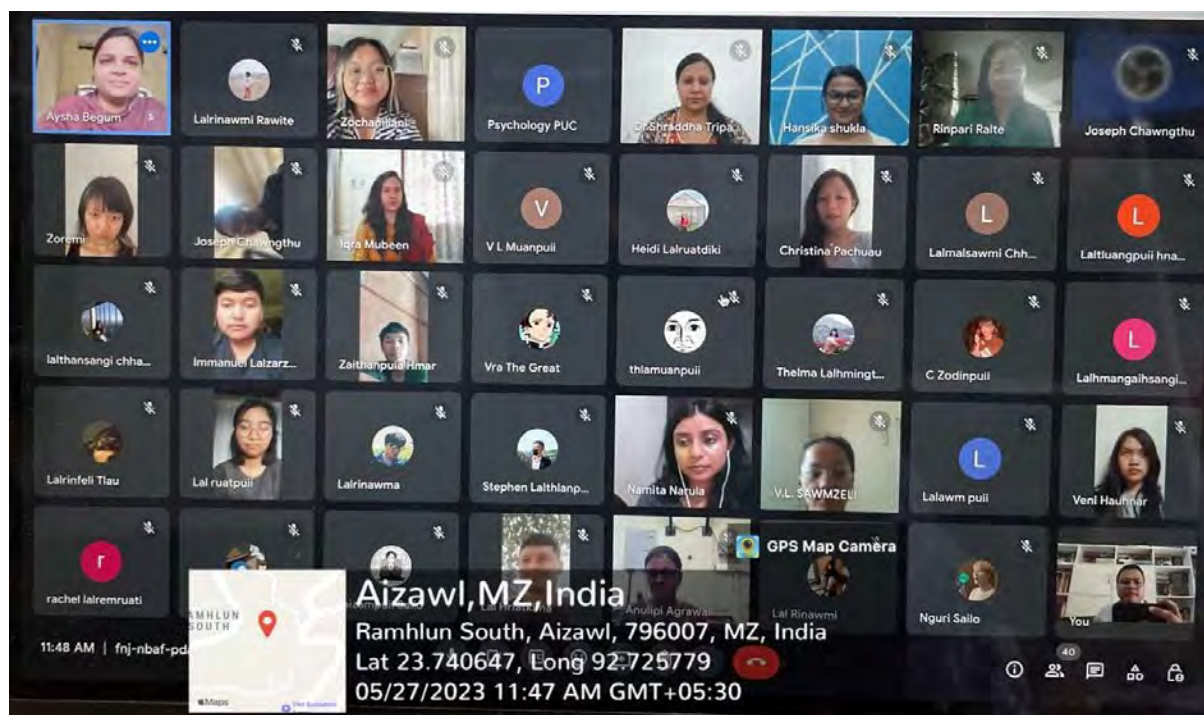
Major issues regarding Public Health Related Issues that still prevail in Mizoram

- **Stigma** related to Mental Illnesses
- **Less awareness** relating to wrong information (myths still prevalent)
- **Less knowledge** about management of Mental Illnesses
- **Substance use** related issues
- **Mental distress**

GPS Map Camera

Aizawl, Mizoram, India
 PP65+XQJ, Mission Vengthlang, Aizawl, Mizoram 796005, India
 Lat 23.712469°
 Long 92.711316°
 27/05/23 11:08 AM GMT +05:30

MacBook Air



The 2nd Day of the International Conference began with Online Parallel Scientific Sessions from 11:00 AM. The program started with illuminating lecture by two invited Speakers- Dr. M.V. Sudhakaran, Head, School of Social Sciences, Presidency College, Tamil Nadu Open University (Topic: “Contemporary Social Issues Related to Health”) and Dr. Robert Khawlhing, State Nodal Officer, Mental Health, Mizoram (Topic: “Public Health Related Issues”). The session was followed by 14 scientific paper presentation from different places of India. Valedictory Program was held at 1:00 PM, Chaired by Prof. Rinpari Ralte, Head of Psychology Department, Pachhunga University College. Conference report was given by Dr. Lalropuii, Secretary, Organising Committee. The Conference was concluded with a Vote of Thanks proposed by Johny Lalthafamkima, Organising Member.

Ralte

Prof. Rinpari Ralte
Head
Department of Psychology